

GRAPHIC LOG

Location
Co-ordinates

White Spur

Drill hole no.

WSP 311

Logged by: Corey Jago

Scale: 1:200

Date: 24/4/05

Page: 1

of 6

Structure

F

Grainsize

0.063

1

2

8

32

64

256

mm

Sample

Rock / facies description + alteration

0-16m - weathered rock + areas of broken core

4m -

3cm subrounded felsic clast with 1mm subrounded qtz (5%)

Massive fspar >> qtz phyric lithic coarse sandstone

25% 2mm subrounded pink/cream/white fspars xstals
5% 1-2mm subrounded qtz xstals

lithic types

- silicified clasts
- mudstone (small + minor)
- clear → smoky + white angular volc clasts
- cream rhyolite (?) clasts (~1cm)
- some appear vesicular or cryptocrystalline
- w/ 1-2mm spotted silicified texture, either vesicles or xstals
- dark green clast - reminds me of tuff sst in canal (Halls Rivulet)

1% disseminated pyrite

mottled green + cream texture to pink + cream up hole.

chlorite, sericite + other phyllosilicate alteration
numerous Fe-carbonate veinlets, jointing and spotted alteration in areas.

silicified pumice fragments

24.9m - 1cm clast w/ orange yellow halo - weathered sulphide? ...

30m - 6cm silicified clast

dark phyllosilicates ~5%

18.2m sulphides in veinlets

~23m - brown grey altered fspar

altered pumice - sericitic, silicic

(pumice lens at 23m?) other phyllosilicates

silicified top - mottled cream, green-grey + pink

38m - grains w/ white halos - silicification
also appears as spotting

20% 1-3mm white + cream subrounded fspar xstals

7% - 2mm sbord qtz xstals

trace disseminated pyrite ~1% - some weathered

~25% lithics - pale grey → cloudy white silicified

- felsic clasts (rhyo?)

- minor mudstone

45.2m - cream silicified brecciated rhyolite clast (~2cm)

sericite + chlorite also white carbonate spotting
and Fe-carb veinlets

dark green wispy phyllosilicate altered pumice?
poorly bedded medium to coarse grained
fspar qtz phyric pumiceous lithic volcaniclastic sst

grading ↑

GRAPHIC LOG

Location
Co-ordinates

White Spur

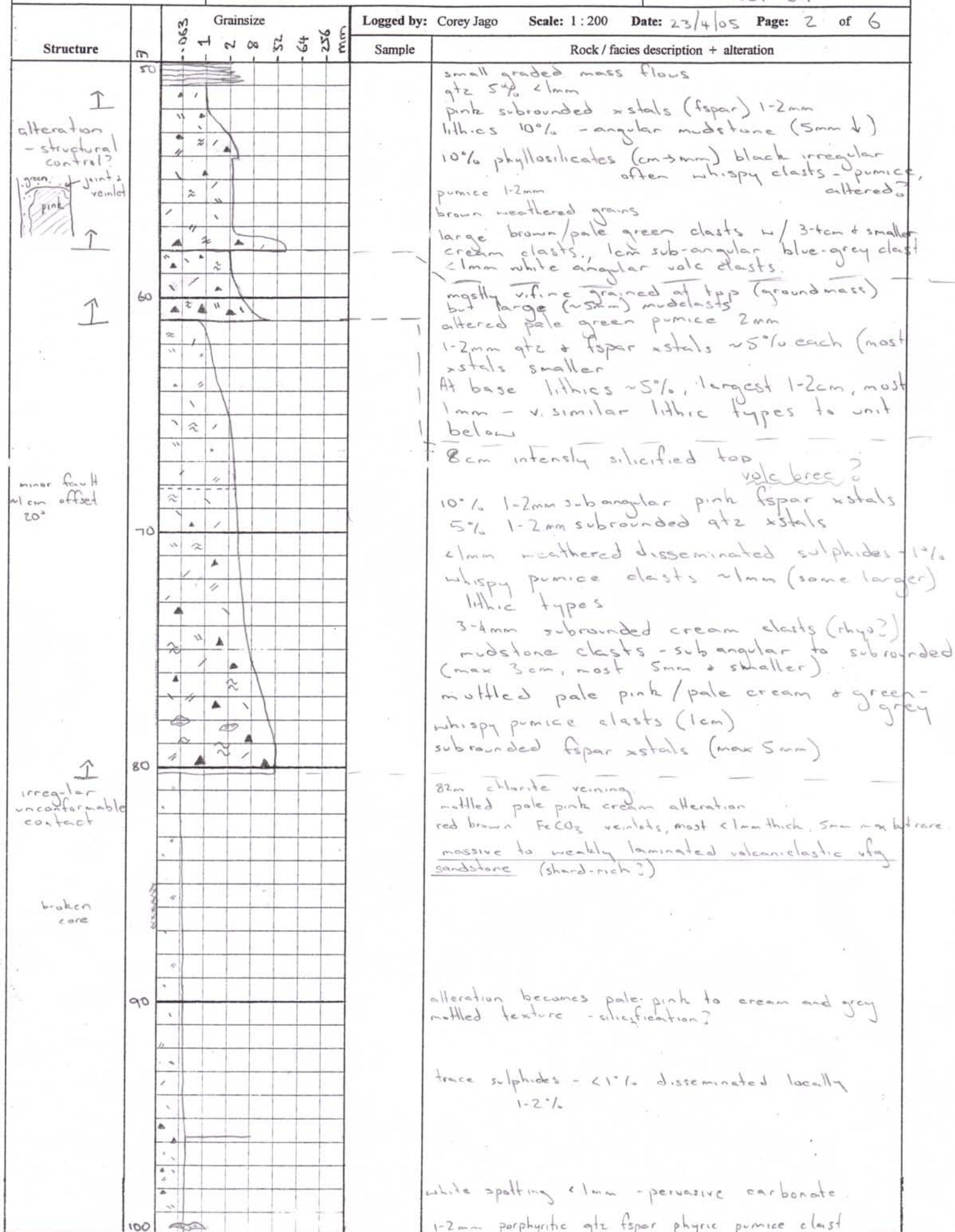
Drill hole no.

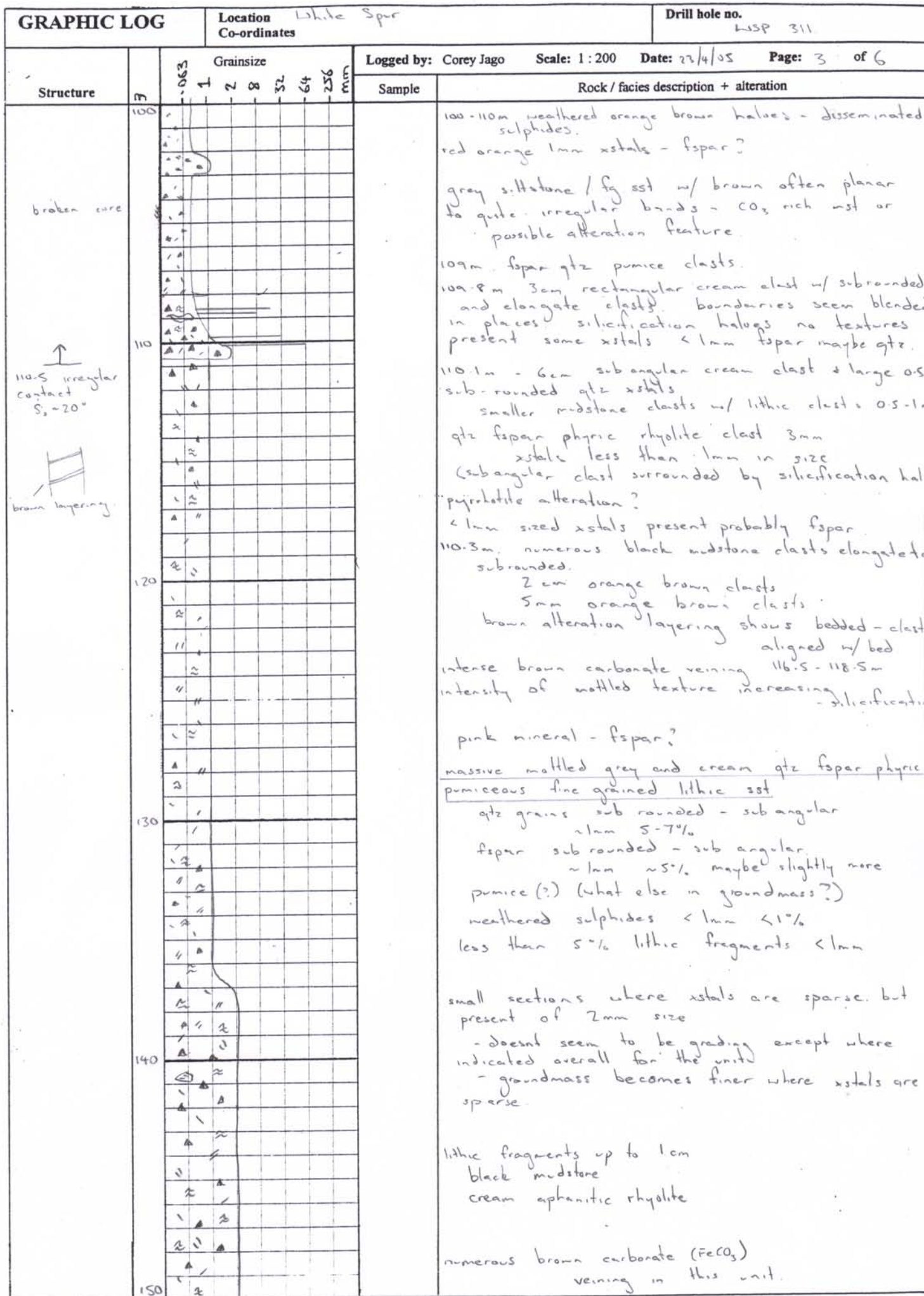
WSP 311

Logged by: Corey Jago

Scale: 1:200

Date: 23/4/05 Page: 2 of 6





GRAPHIC LOG

Location
Co-ordinates

White Spur

Drill hole no.

WSP 311

Logged by: Corey Jago

Scale: 1:200

Date:

Page: 4 of 6

